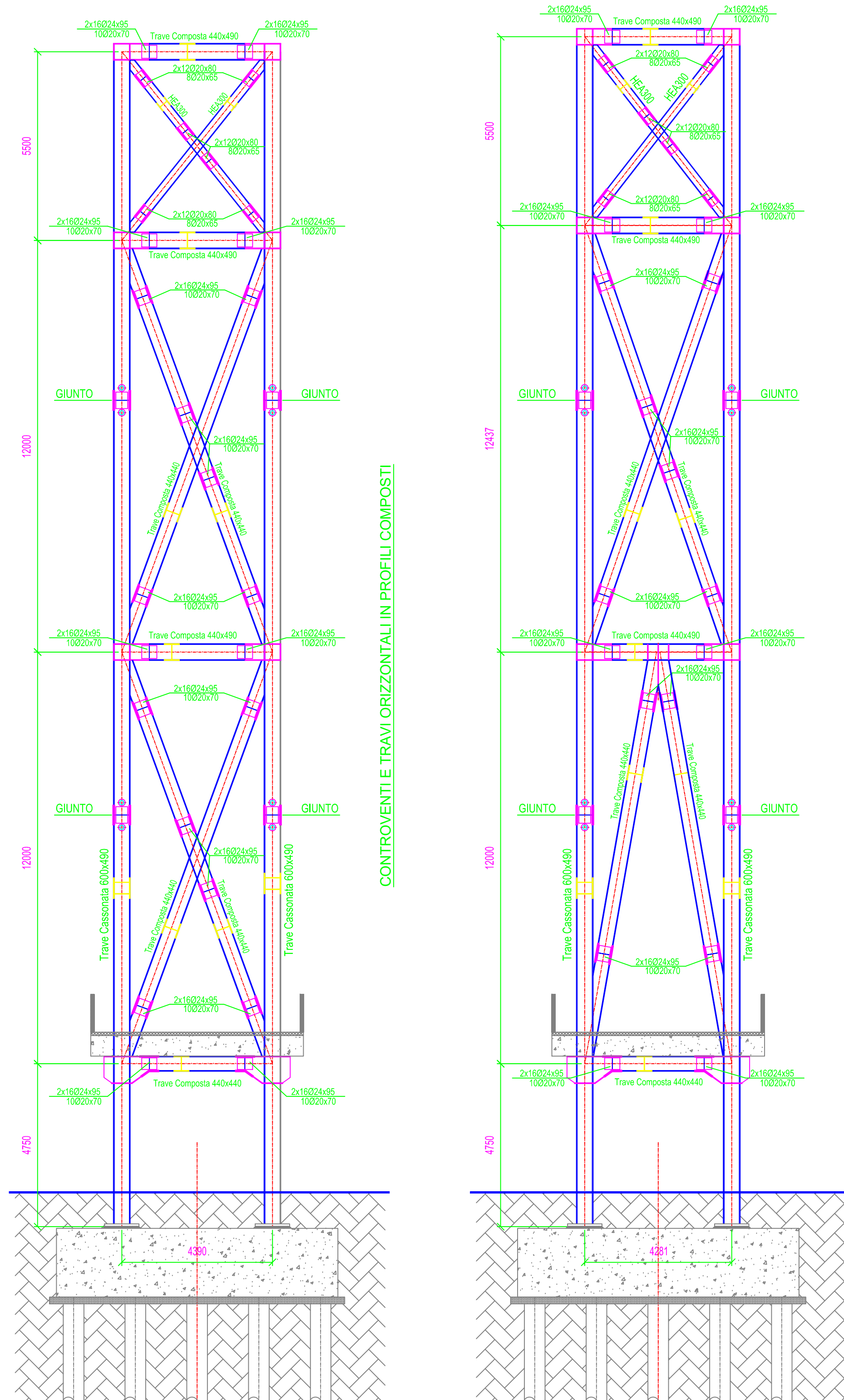
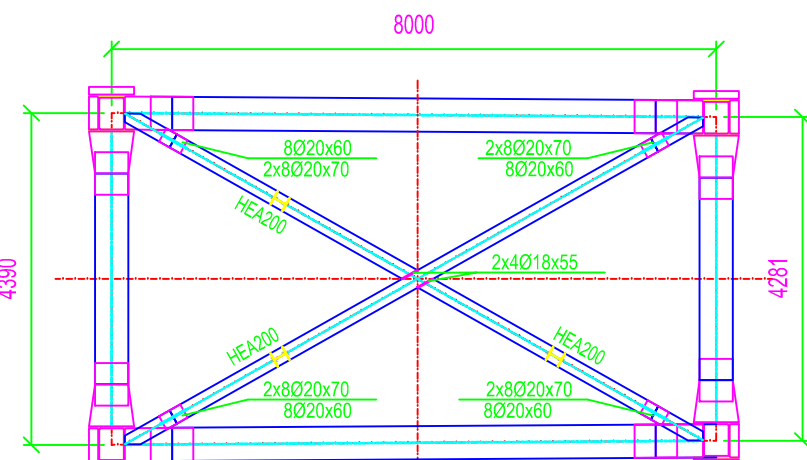


CAVALLETTO TRIBUNA

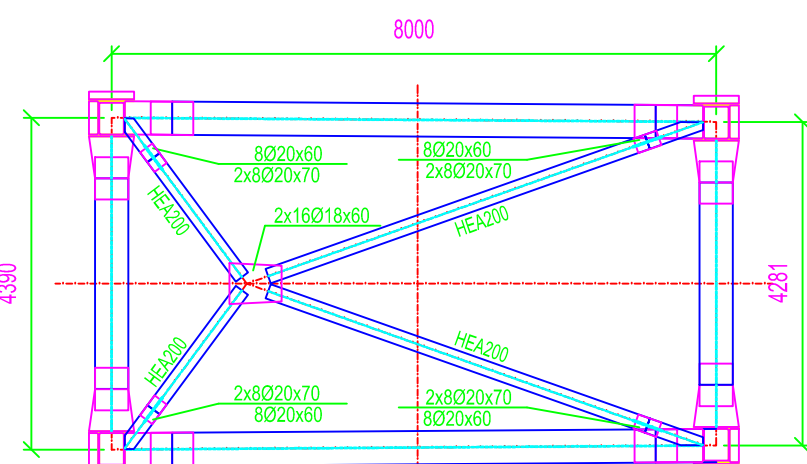


CONTROVENTI E TRAVI ORIZZONTALI IN PROFILI COMPOSTI

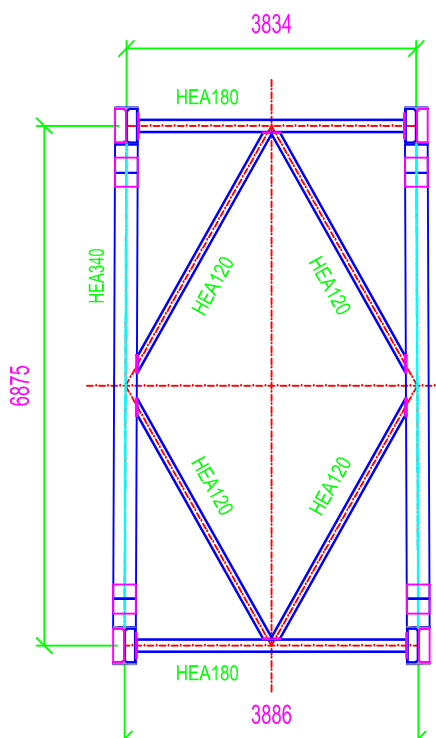
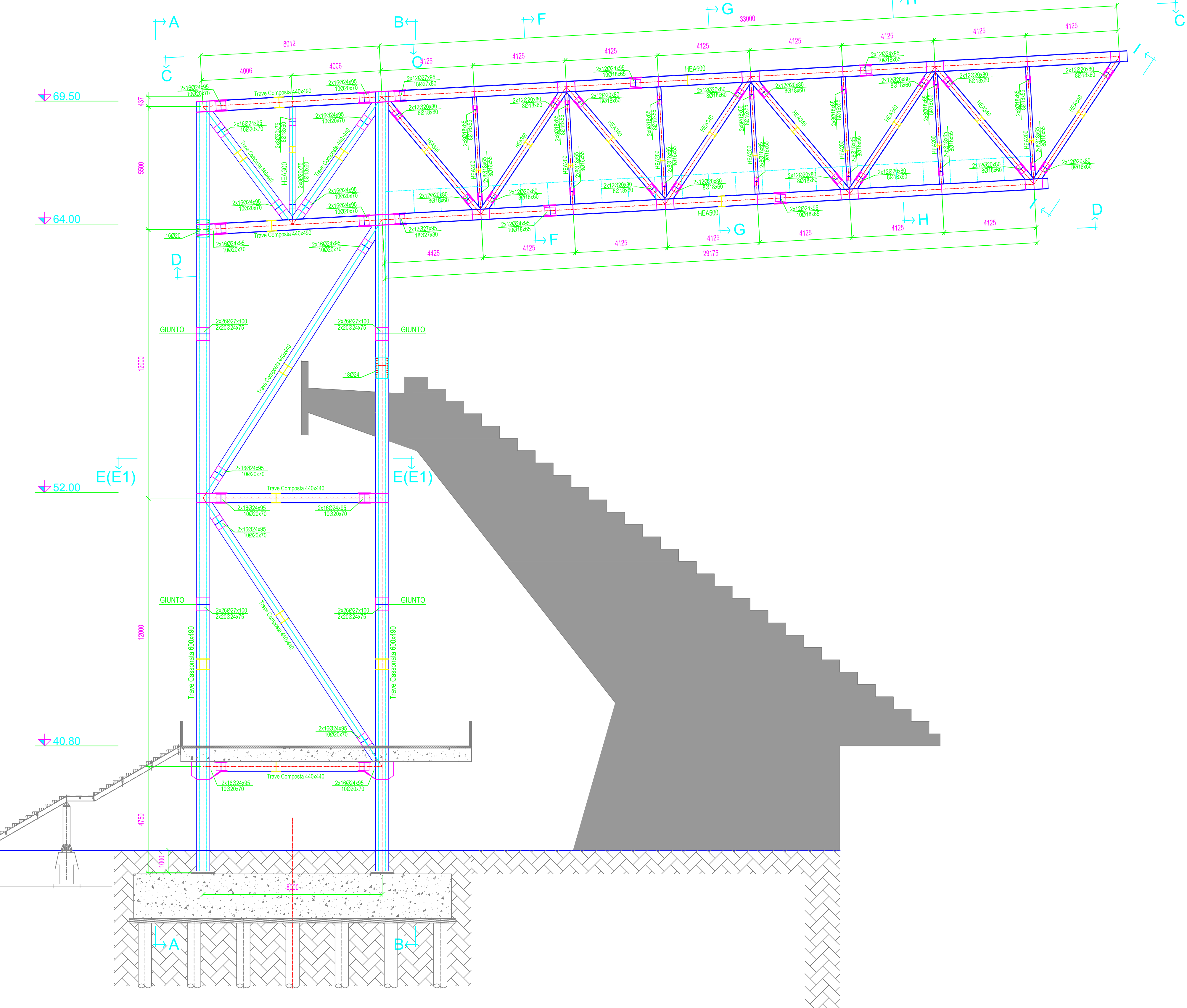
Sez. E-E



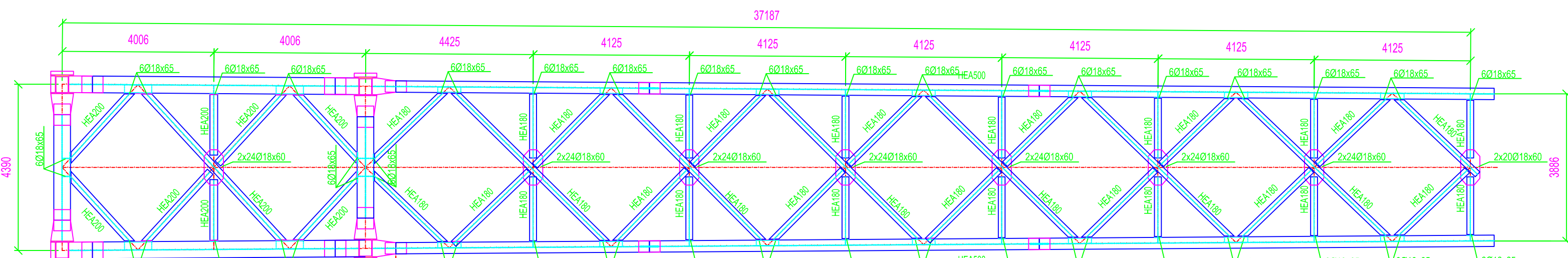
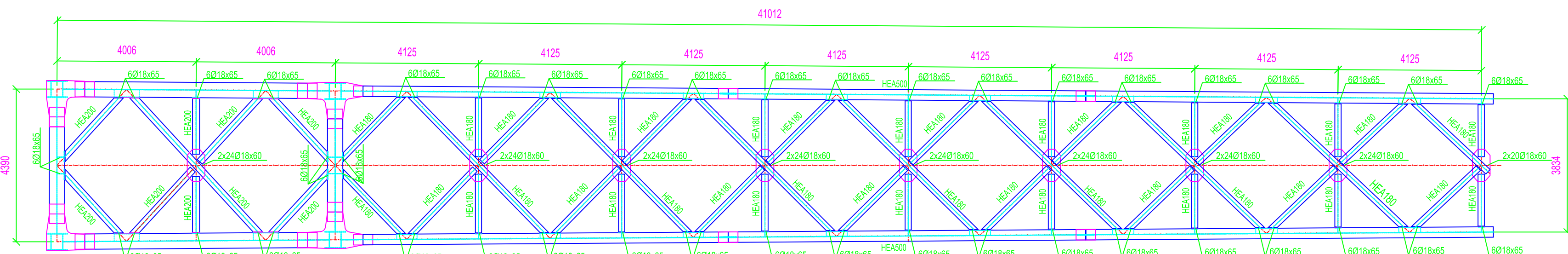
Sez. E1-E1



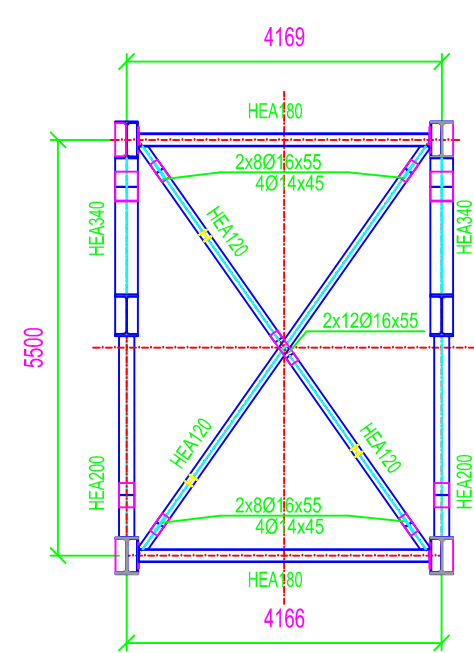
PER CAVALLETTI PICCH. 49-55



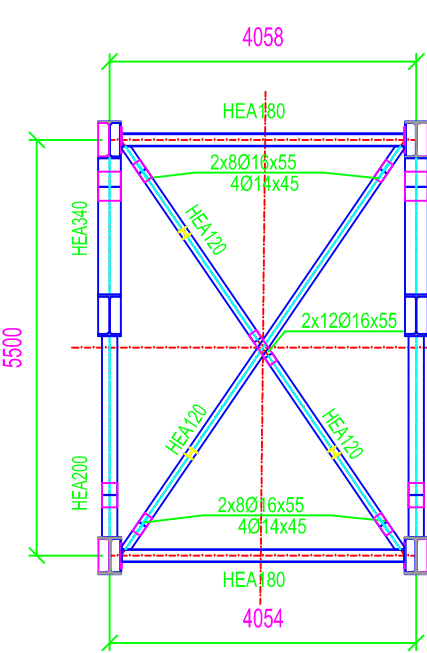
Sez. I-I



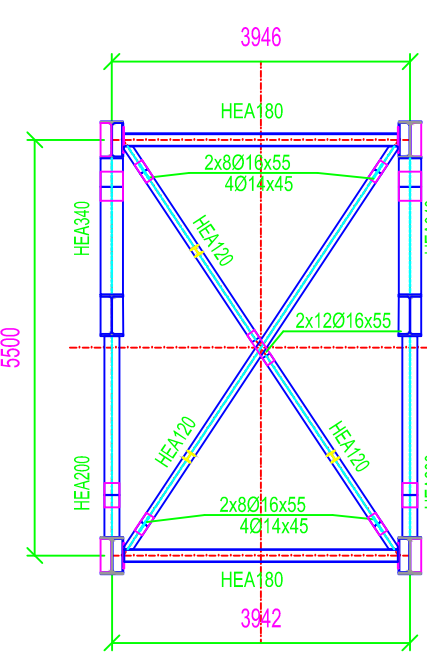
Vista D-D



Sez. F-F



Sez. G-G

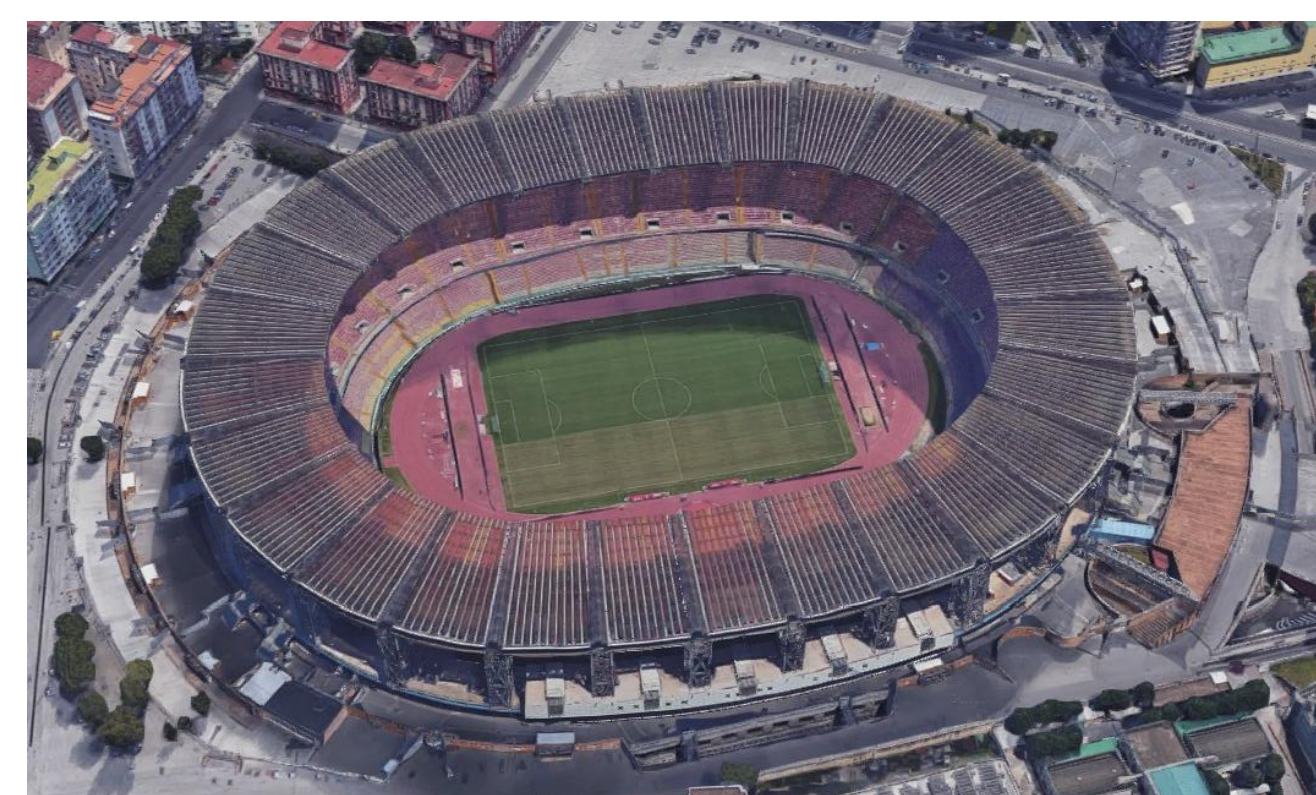


Sez. H-H



STADIO SAN PAOLO

Intervento di completamento della verifica delle opere in carpenteria metallica
Progetto esecutivo



Rup:
Arch. Vincenzo Quaranta

Gruppo di progettazione
Ing. Maurizio Attanasio
Geom. Domenico Mennitti
Istr. tecnico Aniello Manzo

Timbri:

STRUTTURA CAVALLETTO TRIBUNA

Scala: 1:100

Data:

Dicembre 2018

Documento:

TAV_06